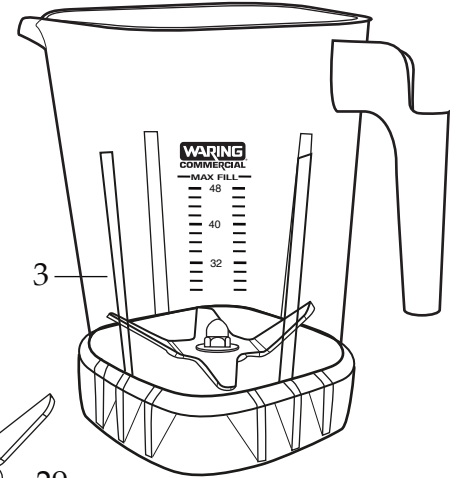


# WARING COMMERCIAL

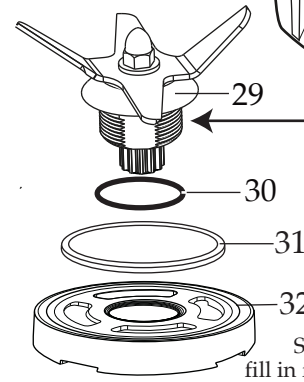
Japan Xtreme Blender with  
4 Reprogrammable Beverage Stations  
with 48 oz. Raptor Container and  
Small Sound Enclosure

## MX1500XTPJ

**503351**  
MX Coupling Wrench  
(optional)



Sealant all round threads, fill in flats.

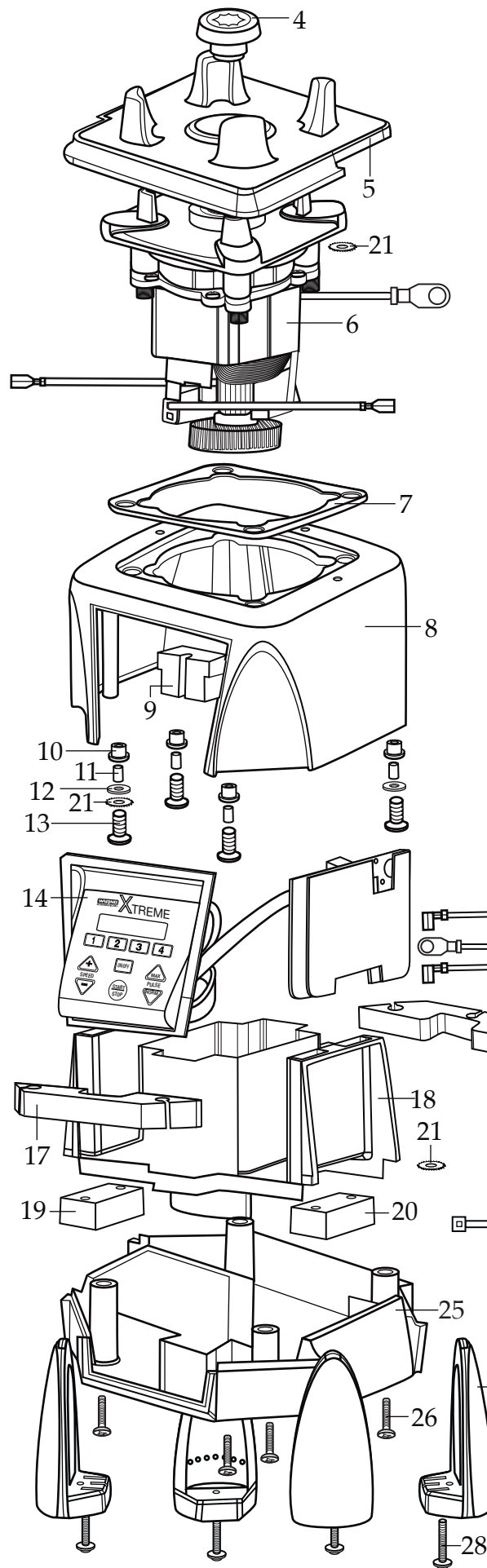


**Notes :**  
Torque 100-125 in./lbs  
Sealant all around the threads,  
fill in flats. Dow Corning Sealant RTV 733

**030889**  
Blending Assembly Kit (Raptor containers)

**031060**  
Blending Assembly Kit

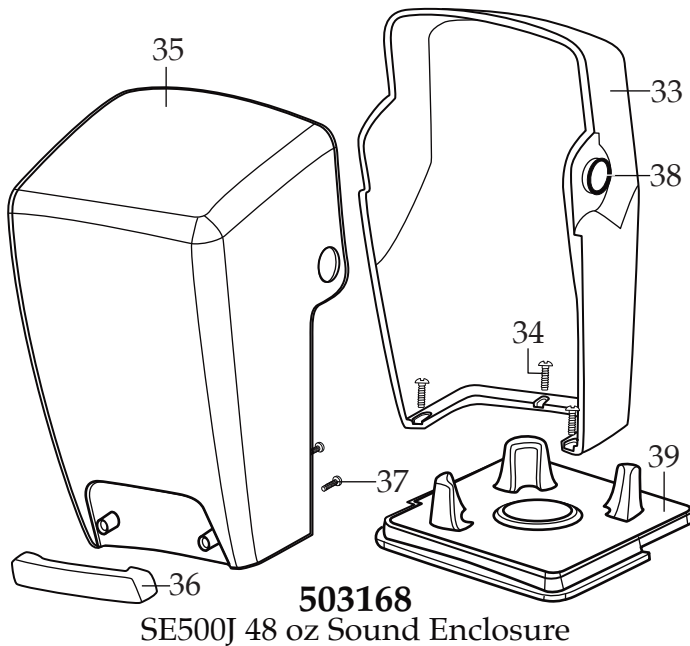
**032761**  
MX Jar Wrench  
(optional)



Date Code Location  
YY|MM|DD  
year year | month month | day day

Illustration#	Part#	Description
1	026425-E	Jar Lid Cover <i>(changed after 6/9/2010)</i>
2	027954-M	Monoprene Jar Lid <i>(changed after 7/3/2012)</i>
3	503439	48 oz. Stackable Container with Blending Assembly <i>(on units after 3/1/2011)</i>
	030888	48 oz. Stackable Jar ONLY
	503374	48 oz. Eastman Container with Blending Assembly
	503308	48 oz. Jar ONLY (use 030888)
4	028538	Drive Coupling
5	026443	Sound Enclosure Jar Pad
6	035397	Leili Motor with Sensor <i>(on units after 9/5/2017)</i>
	028101	ECM Motor with Sensor
7	026437	Dampening Plate Gasket
8	028032-09	Black Top Housing
9	028541	Motor Foam (2 required)
10	026439	Dampening Plate Bushing (4 required)
11	026453	Dampening Plate Sleeve (4 required)
12	026459	Washer (2 required)
13	028929	Sems (4 required)
14	036922	Control Panel with Interlock <i>(on units after 7/16/2019)</i>
	035610	Control Panel 5% Low <i>(on units after 9/29/2017 Use 036922)</i>
	029812	Soft Start Control Panel (use 035610)
15	027804	Filter Board
16	028248	Top Housing Foam Rear Baffle
17	028249	Top Housing Foam Front Front Baffle
18	028240-67	Motor Housing 67mm <i>(on units after 9/5/2017)</i>
	028240	Motor Housing 60mm
19	028247	Bottom Housing Foam Baffle
20	028542	Foam Baffle
21	002943	Washer (3 required)
22	035450	Cord /Japan <i>(on units after 4/13/2016)</i>
	026925	Cord Set
23	007556	Strain Relief
24	013731	Wire Tie (3 required)
25	028241-09-X	Black Bottom Housing
26	012505	Screw (4 required)
27	026430	Corner Post (4 required)
28	028928	Sems (4 required)

Illustration#	Part#	Description
29	503397	Blade Assembly (stackable containers)
	503345	Blade Assembly
30	024271	O Ring
31	024268	Nut Gasket
32	029631	Bearing Holder Nut



33	028250-E	SE500J Inner Enclosure
34	026461	Screw (3 required)
35	028251-E	SE500J Outer Enclosure
36	026434	Sound Enclosure Handle
37	012505	Screw (2 required)
38	027447	O ring (2 required)
39	026443	Sound Enclosure Jar Pad

